



# 2024 Timetable Nanango



MONDAY			
Studio 1		Studio 2	
3.30pm – 4.00pm	Beginner Aerial (RS/EB)	3.30pm – 4.00pm	La Crème Kids (AM) (turning 3 & 4)
4.00pm – 4.30pm	Beginner Ready Set Acro (AM)	4.00pm – 4.30pm	Junior Ballet (EB/RS)
4.30pm – 5.00pm	Beginner Ready Set Dance (Jazz/Hip Hop/ Tap/Singing) (AM)	4.30pm – 5.00pm	Junior Jazz/Hip Hop (HS)
5.00pm – 5.30pm	Beginner Ready Set Ballet (HS)	5.00pm – 5.30pm	Junior Acro (AM)
5.30pm – 6.00pm	Junior Aerial (HS)	5.30pm – 6.00pm	Intermediate Ballet Exam** (Level 3) (AM)
6.00pm – 6.30pm	Senior Ballet Exam ** (Level 6) (HS)	6.00pm – 6.30pm	Junior Tap (AM)
6.30pm – 7.00pm	Modern Jazz 5* (HS)	6.30pm – 7.00pm	Senior Ballet Exam (AM)** (Level 4)
7.00pm – 7.30pm	Modern Jazz 9* (HS)	7.00pm – 7.30pm	Advanced Ballet Exam ** (Sub Elementary) (AM)
7.30pm – 8.30pm	Vocational Ballet Exam** (HS) (Adv 2)	7.30pm – 8.30pm	Vocational Ballet Exam** (AM) (Adv 1)

TUESDAY			
Studio 1		Studio 2	
9.15am – 9.45am	La Crème Mini's (turning 2 & 3) (AM/BS)		
3.45pm – 4.15pm	Advanced Ballet & Pointe (BS)	3.45pm – 4.15pm	Advanced/Senior Ballet & Pointe (AM) *must be approved to go en pointe*
4.15pm – 4.45pm	Advanced Contemporary (AM)	4.15pm – 4.45pm	Senior Contemporary (BS)
4.45pm – 5.15pm	Advanced/Senior Acro (BS)	4.45pm – 5.15pm	Senior Acro (AM)
5.15pm – 5.45pm	Advanced Jazz (BS)	5.15pm – 5.45pm	Senior Jazz (AM)
5.45pm – 6.15pm	Advanced Hip Hop (AM)	5.45pm – 6.15pm	Senior Hip Hop (BS)
6.15pm – 6.45pm	Advanced Tap (AM)	6.15pm – 6.45pm	Advanced/Senior Tap (BS)
6.45pm – 7.15pm	Senior Aerial	6.45pm – 7.15pm	Advanced Ballet Exam ** (Sub Elementary) (AM)
7.15pm – 7.45pm	Advanced Aerial (BS)		
	Senior/Advanced Cabaret/Heels (BS)		

WEDNESDAY	
Studio 1	
3.30pm – 4.00pm	Intermediate Tap (CB)
4.00pm – 4.30pm	Intermediate Ballet (CB)
4.30pm – 5.00pm	Intermediate Contemporary (CB)
5.00pm – 5.30pm	Intermediate Jazz (CB)
5.30pm – 6.00pm	Intermediate Hip Hop (CB)
6.00pm – 6.30pm	Intermediate Acro (CB)
6.30pm – 7.00pm	Intermediate Aerial (CB)
7.00pm – 7.30pm	Adult Heels (CB)
7.30pm – 8.00pm	Adult Aerial (CB)

**Term Dates:**

- Term 1: Monday 29<sup>th</sup> January – Friday 29<sup>th</sup> March
- Term 2: Monday 15<sup>th</sup> April – Friday 21<sup>st</sup> June  
\*\*No Classes Monday 17<sup>th</sup> June\*\*
- Term 3: Monday 8<sup>th</sup> July – Friday 13<sup>th</sup> September
- Term 4: Monday 30<sup>th</sup> September – EOY Concert date

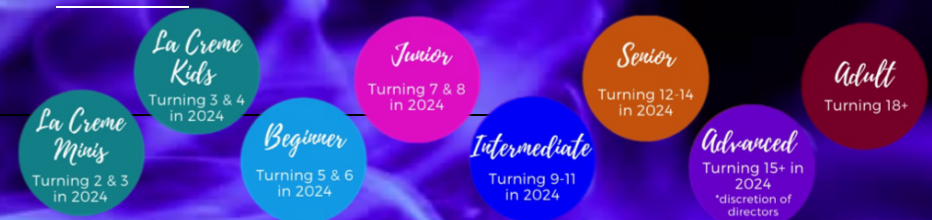
**Please Note**

Classes are held as normal on Pupil Free Days & Public Holidays

Timetable is subject to change

\*\* Entry into this class is by invitation only

AM = Miss Ashleigh BS = Miss Bec CB = Miss Chelsea  
HS = Miss Hayley RS = Miss Rhiannon EB= Miss Emily



Directors: Ashleigh Mangan & Bec Stone  
Studio Address: Kimlin St., Nanango, QLD 4615

0456 034 021

ashleigh@lcda.net.au | bec@lcda.net.au

www.lcda.net.au

Postal Address: PO Box 597, Nanango, QLD, 4615